

HOW TO TREAT AND DISPOSE OF MIRROR WASTE

-- SMALL KIT --

Mirroring chemicals contain heavy metals. It is *irresponsible and potentially illegal* to pour untreated heavy metal waste into the public sewer system. The water that you use only for cleaning the glass does not need to be treated.

The clay is specially formulated to absorb and isolate heavy metals. Waste water that has been treated with the clay and filtered is pure enough to pour down the drain. The used clay and filter paper can be safely thrown out with the solid trash.

The small kit contains enough material to treat about 8 gallons (30 liters) of waste water.



STEP 1

Buy two half-gallon (2 L) clear plastic bottles.
Fill the first bottle with waste water.



STEP 2

Add ½ tablespoon (¼ oz or 8 g) of clay to the waste water bottle.



STEP 3

Cap the bottle and shake it well. Let it settle overnight.



RESULTS OF STEP 3

The waste will separate into an almost colorless liquid over a brown, gelatinous residue.



STEP 4

Cut a square of filter paper large enough to fit over the bottle. Fasten it on creating a 1" deep bowl in the top.



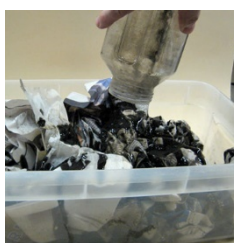
STEP 5

Carefully pour the liquid from the waste bottle into the filter. Pour the solids in last and allow them to drain.



STEP 6

Remove the filter paper and solids. Pour the filtered water down the drain.



STEP 7

Place the damp solids and filter paper into the solid trash.

HOW TO TREAT AND DISPOSE OF MIRROR WASTE

-- LARGE KIT --

Our large kit contains enough clay and filter paper to treat about 32 gallons (120 liters) of waste water. Use ½ oz (15 g) of clay per gallon of waste. To treat 5 gallons of waste, you will need 75 g or 2 ½ ounces of clay. Fill the plastic cup in your kit up to the top twice.



STEP 1

Get two 5 gallon (20 liter) buckets. Fill the first bucket with mirror waste.



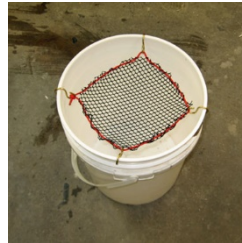
STEP 2

Add about 2 ½ ounces (75 g) of clay to 5 gallons of waste.



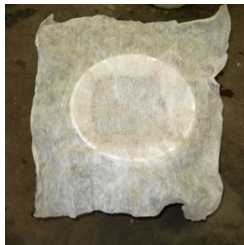
STEP 3

Mix vigorously. Let the mix sit until the clay has settled.



STEP 4

Hook the filter support net to the sides of the empty bucket.



STEP 5

Place a sheet of filter paper over the support net.



STEP 6

Pour the treated water and the clay through the filter paper.



STEP 7

Let the water drain out of the clay.

Throw the damp clay and filter paper into the solid trash. Pour the filtered water down the drain.